

# Wrights



**10 May Lane**  
Trowbridge BA14 6AA

**Monthly Rental Of £795**



Wrights Residential, 24 Fore Street , Trowbridge, BA14 8ER  
Phone: 01225 755553, Email: [enquiries@wrightsresidential.co.uk](mailto:enquiries@wrightsresidential.co.uk)  
[www.wrightsresidential.co.uk](http://www.wrightsresidential.co.uk)

**Two bedroom cottage**

**Oil central heating**

**Refitted Kitchen and Bathroom**

**Generous detached garden**

**Village location**

**PVCu double glazing**

**Courtyard**

**Available early March**

**This two bedroom cottage is situated in the village of Yarnbrook, between Trowbridge and Westbury. Features include updated kitchen and bathroom, utility Room, oil central heating, PVCu double glazing, private courtyard and generous detached garden. Available early March, unfurnished**

**The property comprises:**

### **Ground Floor**

#### **Entrance Hall**

With PVCu front door, wood laminate flooring, stairs to the first floor and PVCu double glazed window.

#### **Lounge** *17' 2" x 10' 0" (5.24m x 3.04m) max*

With radiator, electric fire with surround, television point, storage cupboard under stairs and PVCu double glazed window.

#### **Utility room**

With wood laminate flooring, a range of units with wood laminate work top, double panel radiator and sky light.

#### **Kitchen** *9' 5" x 7' 7" (2.87m x 2.31m) max*

With tiled floor, a range of new fitted eye level and base units, wood laminate work tops with tiled splash backs, integrated electric oven and 4 ring gas hob with extractor hood over, space for fridge/freezer and washing machine, sink/drainage unit, PVCu double glazed window and PVCu back door opening onto the private courtyard.

#### **Bathroom** *6' 6" x 5' 5" (1.98m x 1.66m)*

With tiled floor and walls, white suite comprising bath with shower attachment over, hand basin with vanity unit and W.C, heated towel rail and obscured PVCu double glazed window.

### **First Floor**

#### **Landing**

#### **Bedroom 1** *10' 2" x 10' 0" (3.10m x 3.04m) max*

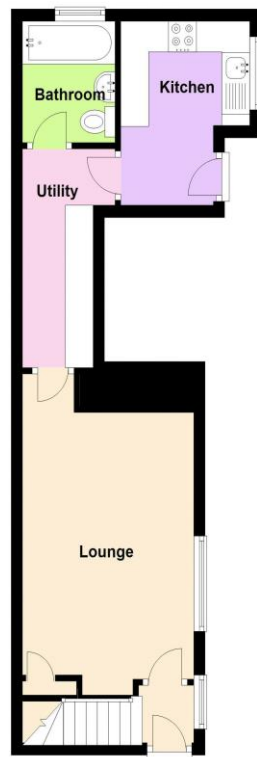
With double panel radiator and PVCu double glazed window.

#### **Bedroom 2** *9' 7" x 7' 9" (2.92m x 2.36m)*

With double panel radiator, loft hatch and two PVCu double glazed windows.



**Ground Floor**



**First Floor**

